

ABC Sample Hospital

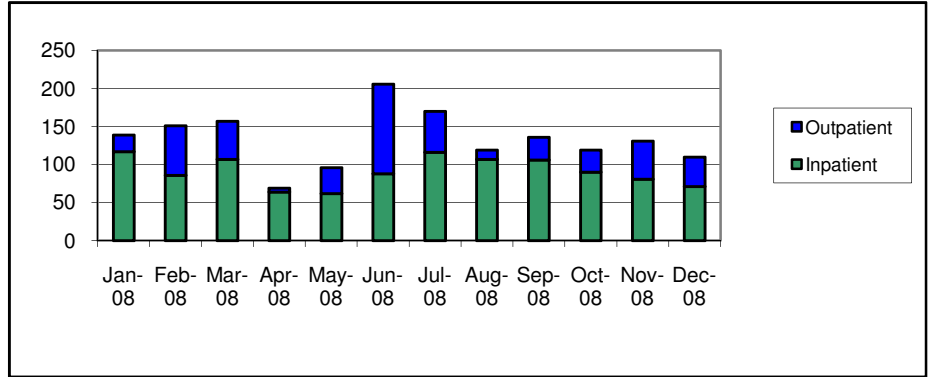
HCFS Hospital Profile Report

State: Texas
Beds: *****
Admissions: *****
Outpatient Visits: *****
Births: *****

HCFS Team: VP of Operations
Regional Manager
Operations Manager
Patient Account Representatives

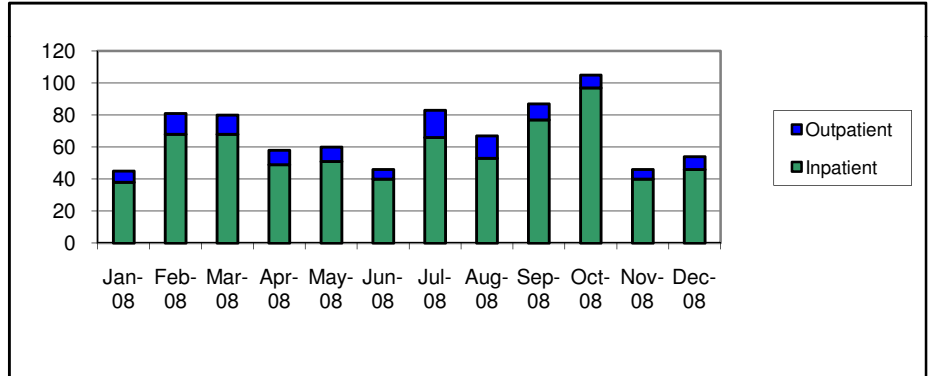
Referrals

Jan-08	139
Feb-08	151
Mar-08	157
Apr-08	69
May-08	96
Jun-08	206
Jul-08	170
Aug-08	119
Sep-08	136
Oct-08	119
Nov-08	131
Dec-08	110



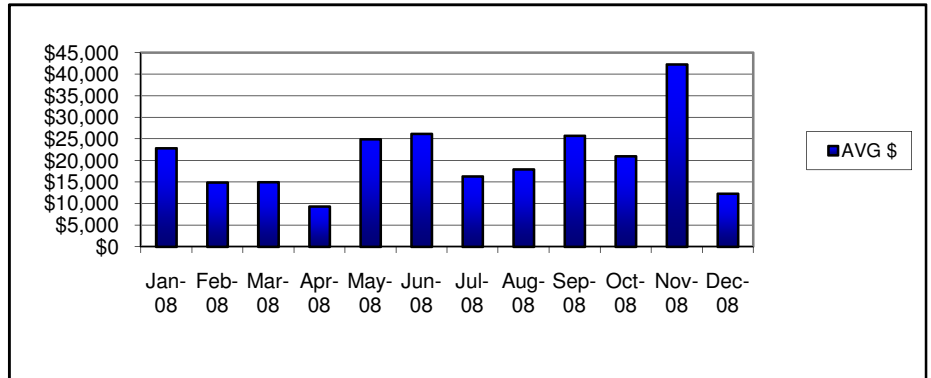
Transmittals

Jan-08	45
Feb-08	81
Mar-08	80
Apr-08	58
May-08	60
Jun-08	46
Jul-08	83
Aug-08	67
Sep-08	87
Oct-08	105
Nov-08	46
Dec-08	54



Average Transmittals \$

Jan-08	\$22,861
Feb-08	\$14,875
Mar-08	\$14,974
Apr-08	\$9,316
May-08	\$24,894
Jun-08	\$26,162
Jul-08	\$16,275
Aug-08	\$17,953
Sep-08	\$25,701
Oct-08	\$20,950
Nov-08	\$42,299
Dec-08	\$12,266

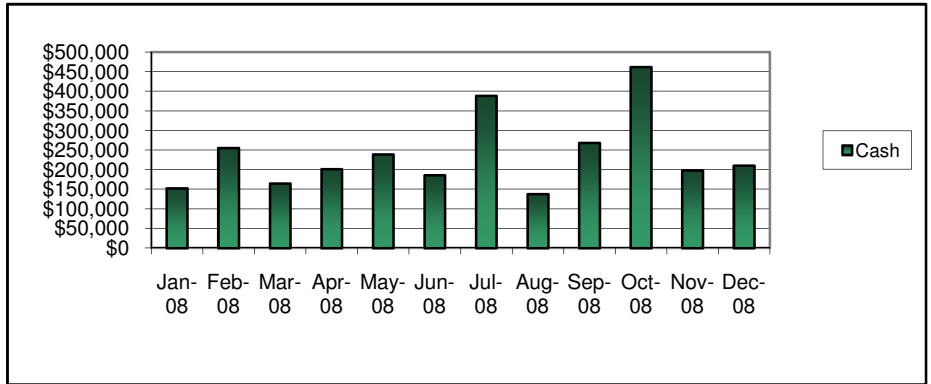


ABC Sample Hospital

HCFS Hospital Profile Report

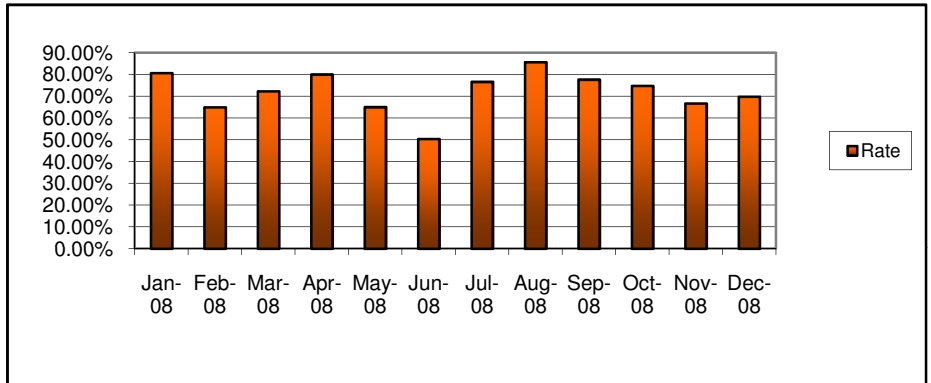
Hospital Cash Collected

Jan-08	\$152,740
Feb-08	\$255,089
Mar-08	\$164,431
Apr-08	\$201,199
May-08	\$238,925
Jun-08	\$185,629
Jul-08	\$388,199
Aug-08	\$137,816
Sep-08	\$268,077
Oct-08	\$462,056
Nov-08	\$197,832
Dec-08	\$210,249



Success Rate

Jan-08	80.61%
Feb-08	64.91%
Mar-08	72.27%
Apr-08	80.00%
May-08	65.00%
Jun-08	50.33%
Jul-08	76.61%
Aug-08	85.71%
Sep-08	77.65%
Oct-08	74.74%
Nov-08	66.67%
Dec-08	69.84%



Success Rate: Transmitted / (Number Referred - Existing Coverage/Recall - Ineligible - In Process)

Payer Mix over 12 Months

County Indigent	2
Insurance (non-specific)	133
Medicare	38
Section 1011	30
Third Party	1
TX Crime Victims	8
TX MCD-SSI	19
TX Medicaid	212
TX Medicaid - Under 18	360
Veterans Administration	2
Workers Compensation	10

